

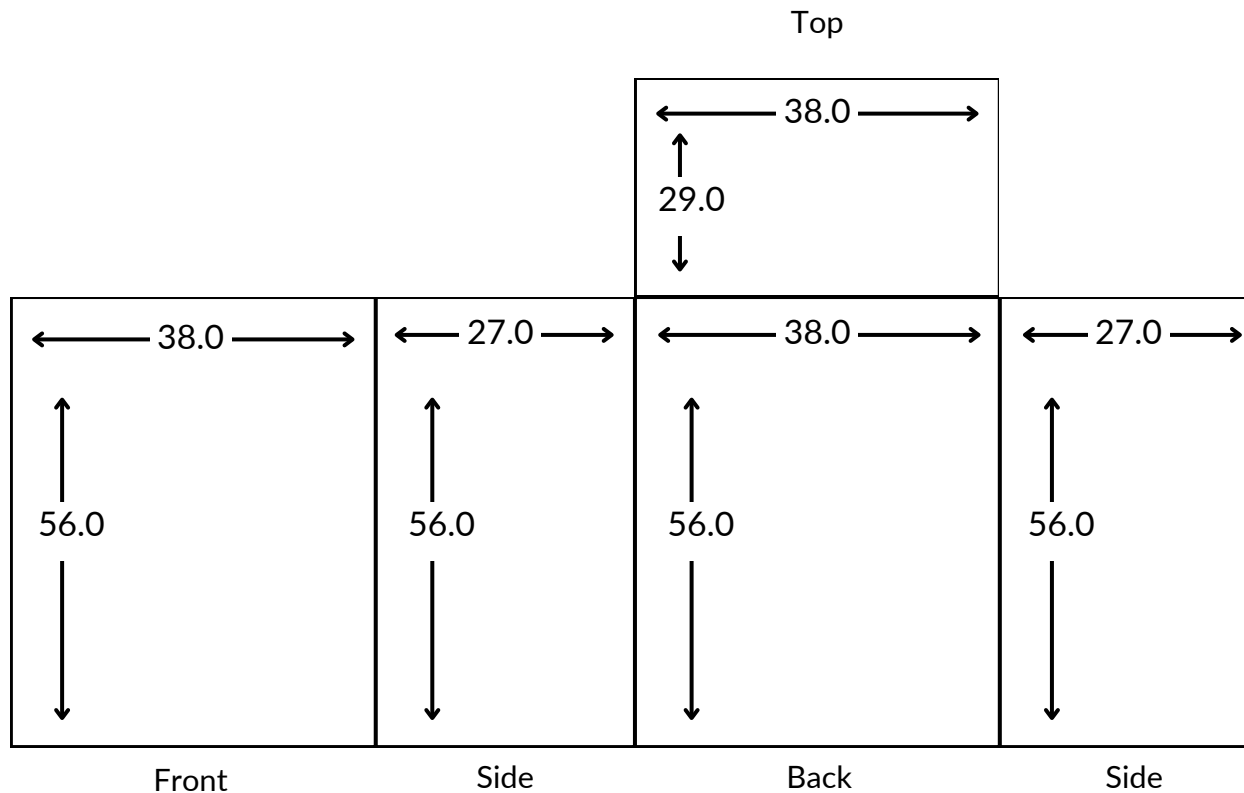
TSCB Number	Traffic Signal Control Box Name	Intersection (Road 1)	Intersection (Road 2)	Cabinet Specs Style Type
130	SUMTER & CITYCENTER (130)	Sumter Boulevard	City Center Boulevard	Style A
120	SUMTER & APPOMATTOX (120)	Sumter Boulevard	Appomattox Drive	Style A
190	TOLEDO & CRANBERRY (190)	Toledo Blade Boulevard	Cranberry Boulevard	Style A
185	TOLEDO & PANACEA (185)	Toledo Blade Boulevard	Panacea Boulevard	Style A
180	TOLEDO & PLANTATION (180)	Toledo Blade Boulevard	Plantation Boulevard	Style A
170	TOLEDO & BOBCAT (170)	Toledo Blade Boulevard	Bobcat Trail	Style A
175	TOLEDO & PRICE (175)	Toledo Blade Boulevard	Price Boulevard	Style A
115	PRICE & SALFORD (115)	Price Boulevard	Salford Boulevard	Style A
110	PRICE & CRANBERRY (110)	Price Boulevard	Cranberry Boulevard	Style A
105	PRICE & CHAMBERLAIN (105)	Price Boulevard	Chamberlain Boulevard	Style A
100	PRICE & S HABERLAND (100)	Price Boulevard	Haberland Boulevard	Style B
125	SUMTER & PRICE (125)	Price Boulevard	Sumter Boulevard	Style C
Coming Soon	PRICE & NPHS	Price Boulevard	North Port High School	TBD

Cabinet Style A

Toledo Blade Blvd. at Cranberry, Panacea, Plantation, Bobcat and Price

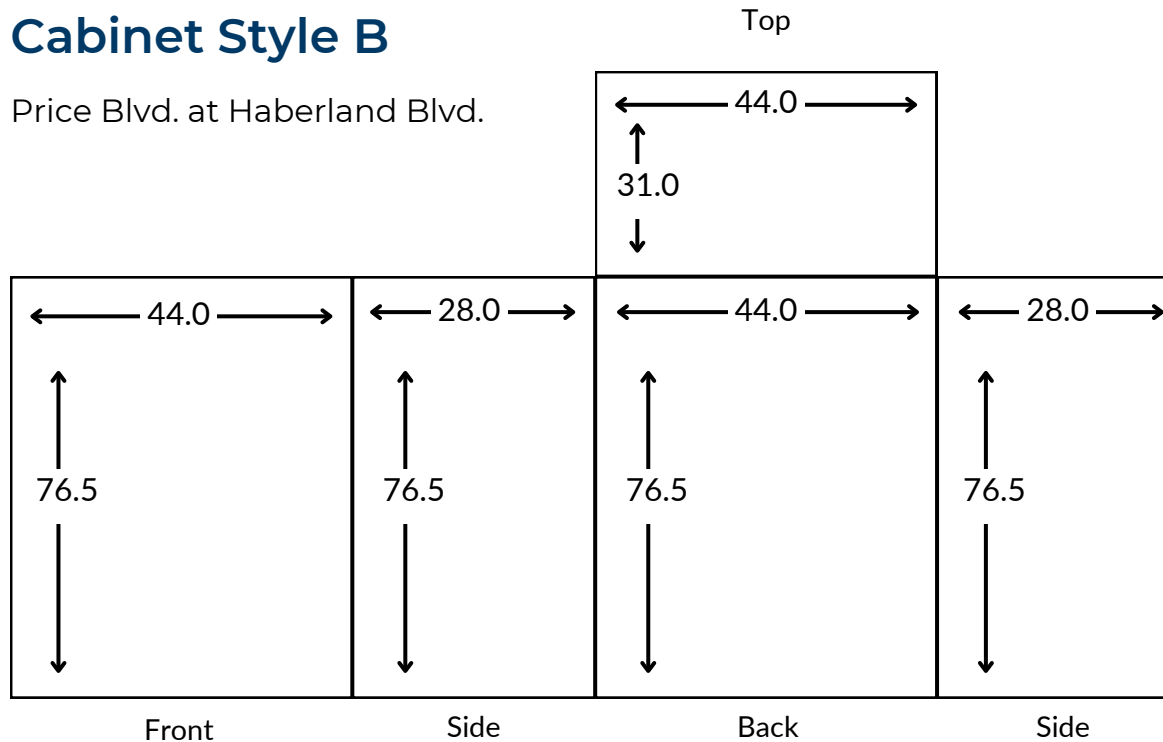
Sumter Blvd. at City Center and Appomattox

Price Blvd. at Salford, Cranberry and Chamberlain



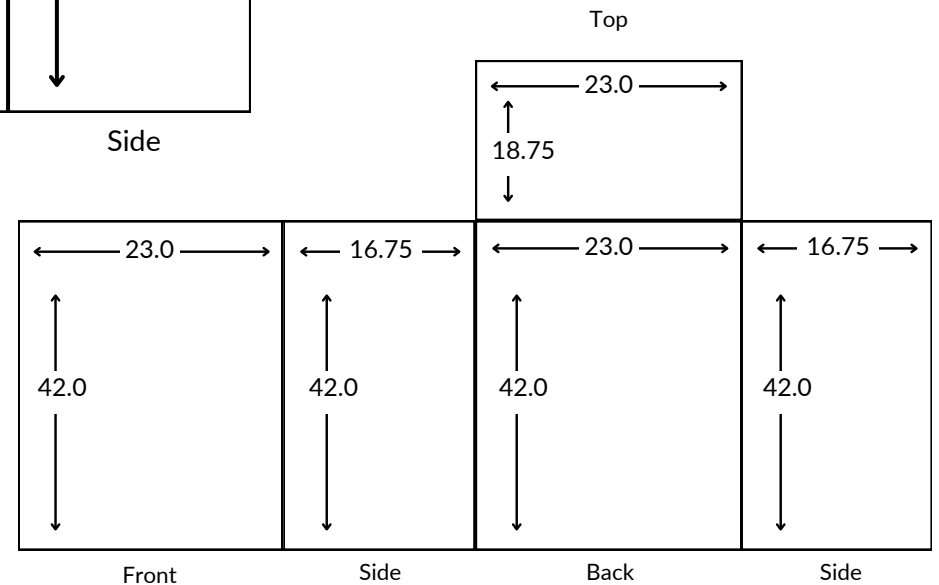
Cabinet Style B

Price Blvd. at Haberland Blvd.



Door on front and rear of cabinet.

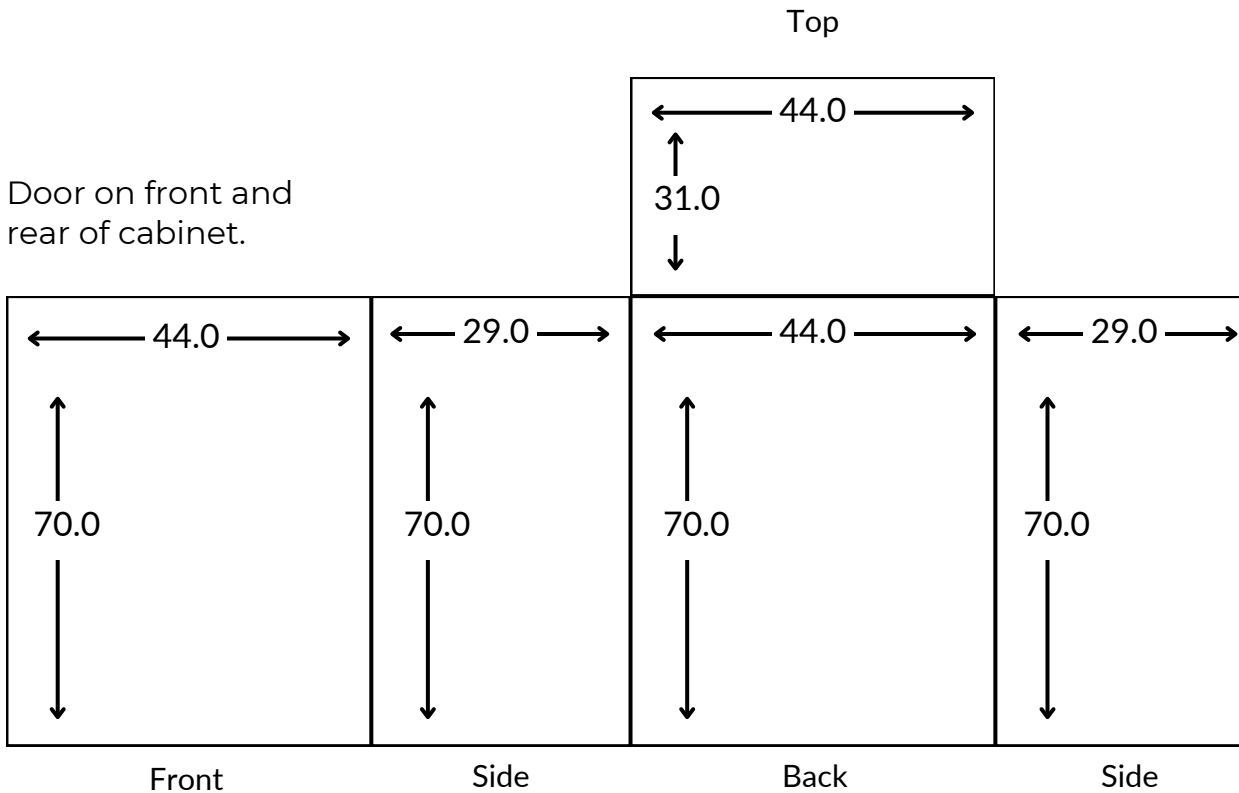
Battery backup

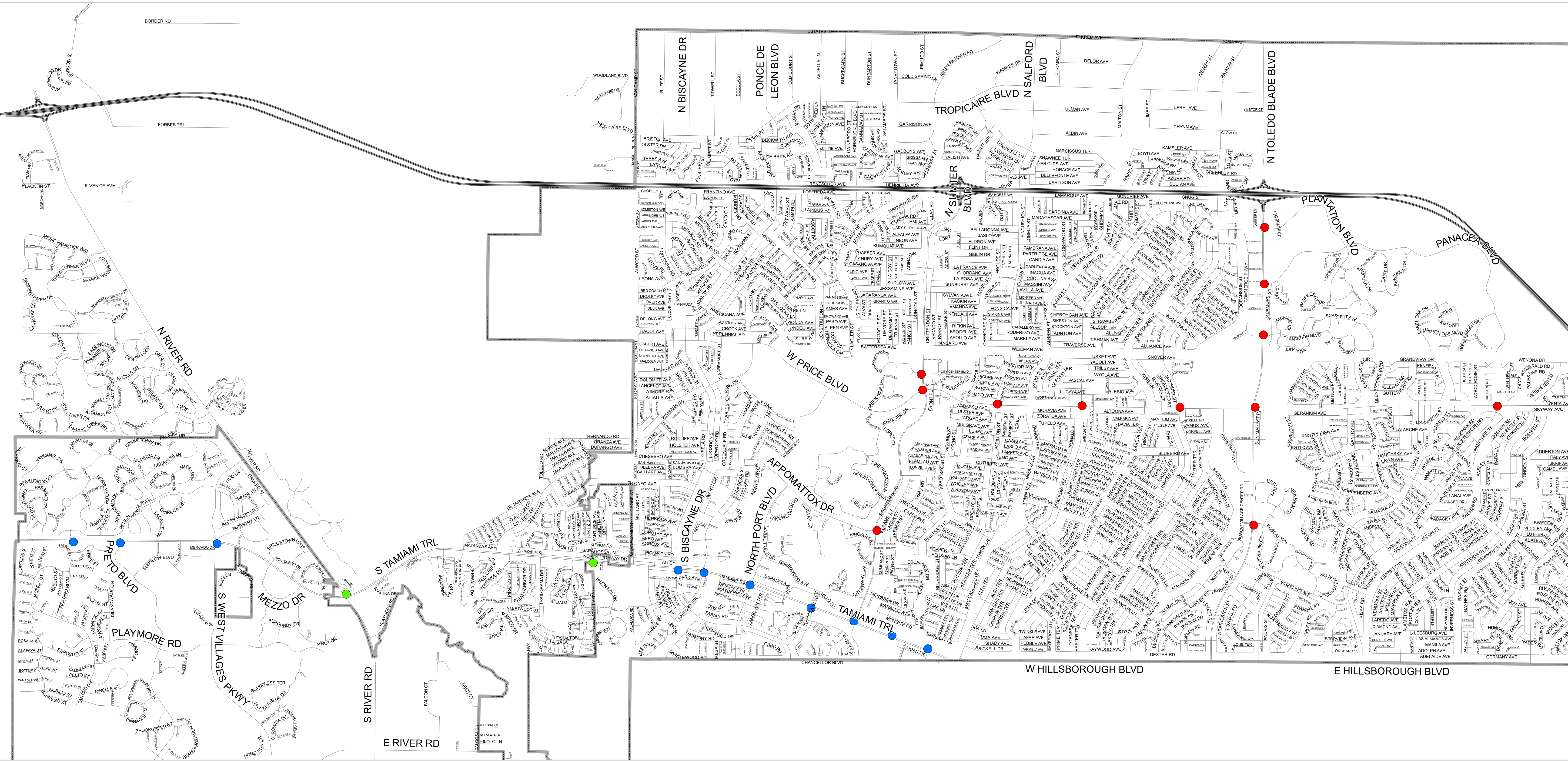


Cabinet Style C

Price Blvd. at Sumter Blvd.

Door on front and rear of cabinet.



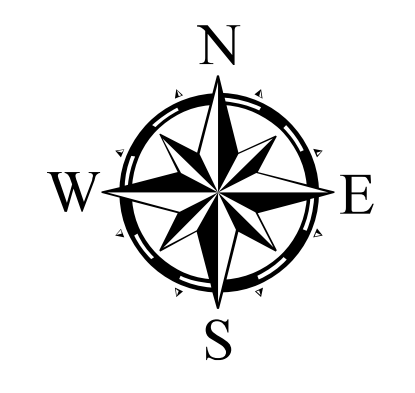


Legend

Traffic Signal Control Cabinets

- City of North Port (12)
- Florida Department of Transportation (10)
- Sarasota County / Florida Dept of Transportation (2)

City of North Port Traffic Signal Control Cabinets



Date Saved: 9/12/2022 12:53:17 PM

Disclaimer: This map is for reference purposes only and is not to be construed as a legal document. Any reliance on the information contained herein is at the user's risk. The City of North Port and its agents assume no responsibility for any use of the information contained herein or any loss resulting there from.